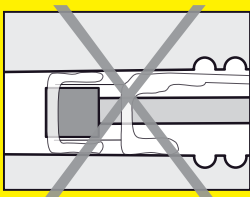
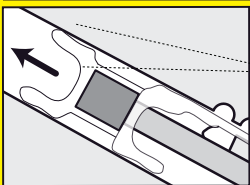
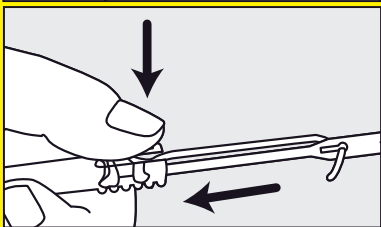
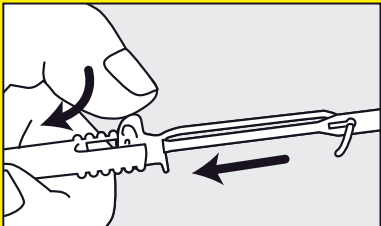
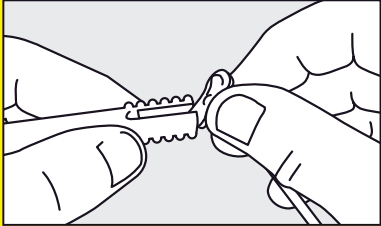




MD

Provox®2/Provox® ActiValve®



No. 10016, 2022-03-10

**Atos**  
atosmedical.com

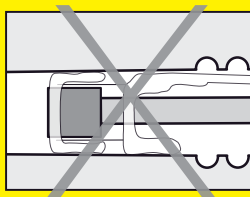
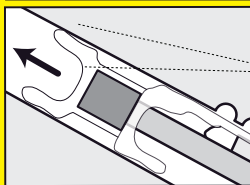
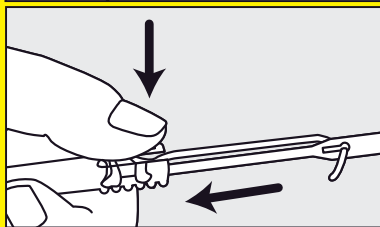
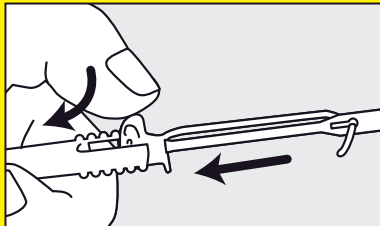
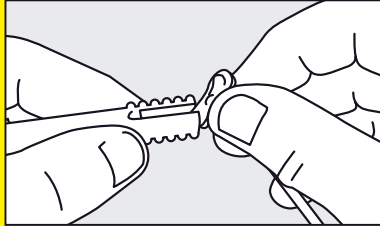
Atos Medical AB  
Kraftgatan 8, SE-242 35 Hörby, Sweden  
Tel: +46 (0)415 198 00 • info@atosmedical.com

© Atos Medical AB, Sweden.



MD

Provox®2/Provox® ActiValve®



No. 10016, 2022-03-10

**Atos**  
atosmedical.com

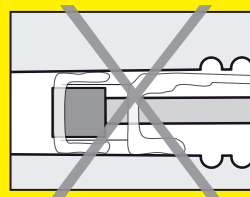
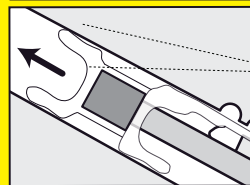
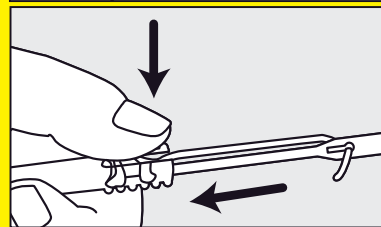
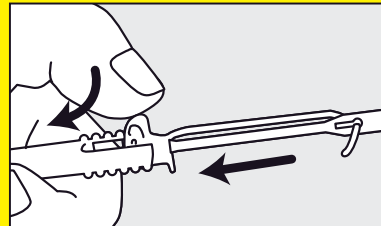
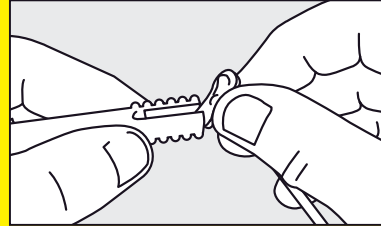
Atos Medical AB  
Kraftgatan 8, SE-242 35 Hörby, Sweden  
Tel: +46 (0)415 198 00 • info@atosmedical.com

© Atos Medical AB, Sweden.



MD

Provox®2/Provox® ActiValve®



No. 10016, 2022-03-10

**Atos**  
atosmedical.com

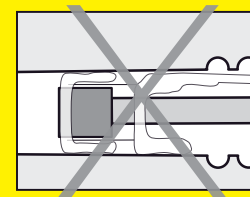
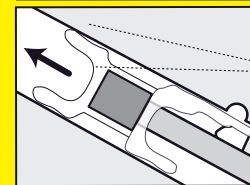
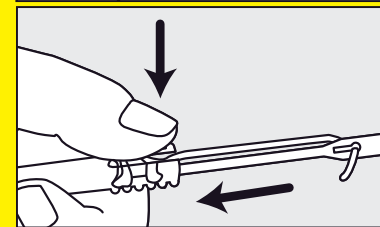
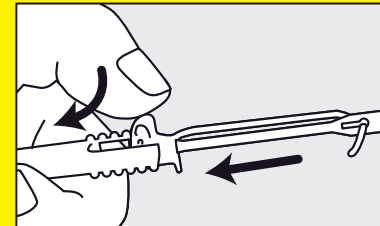
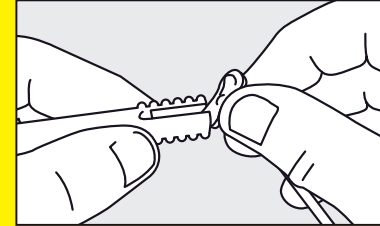
Atos Medical AB  
Kraftgatan 8, SE-242 35 Hörby, Sweden  
Tel: +46 (0)415 198 00 • info@atosmedical.com

© Atos Medical AB, Sweden.



MD

Provox®2/Provox® ActiValve®



No. 10016, 2022-03-10

**Atos**  
atosmedical.com

Atos Medical AB  
Kraftgatan 8, SE-242 35 Hörby, Sweden  
Tel: +46 (0)415 198 00 • info@atosmedical.com

© Atos Medical AB, Sweden.