

TrachPhone®



A versatile HME, suitable for different situations.

Atos

Breathing-Speaking-Living
atosmedical.com



TrachPhone® is a lightweight HME that provides good humidification. It contains a speaking valve function, where the top lid can be pressed to occlude the stoma for voicing. It has additional features for suctioning and supplemental oxygen.

Better pulmonary health

A tracheostomy bypasses the upper airways, and when breathing through a tracheostomy tube the important, natural humidification and filtration functions of the nose and remaining parts of the upper airways are lost.

The use of an HME (Heat Moisture Exchanger) provides heat and moisture of the inspired air and gives positive pulmonary effects, such as less mucus production, less coughing and improvements in respiratory functions.

You need to exhale through the HME to get the HME exchange effect. The pictures below illustrate how it works.

1 When exhaling through an HME, heat and moisture are retained by the HME system.

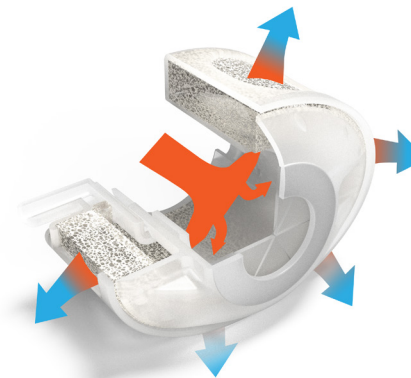


Illustration 1 (exhaling)

2 On inhalation, the heat and moisture are released from the HME and given back to the respiratory tract, compensating for the lost functions of your nose.

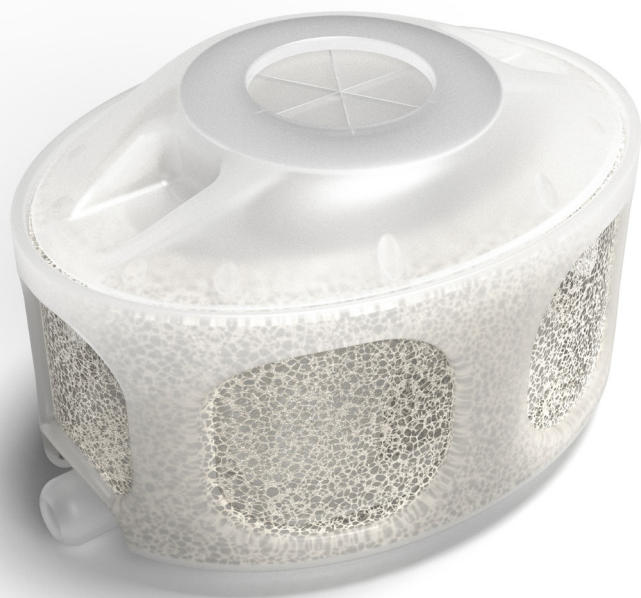


Illustration 2 (inhaling)

For maximum respiratory care, an HME should be used day and night

A versatile HME, suitable for different situations:

- Speaking valve function
- Integrated suctioning port
- Suction port acts as a relief valve
- Integrated oxygen supply port



Speaking with TrachPhone

TrachPhone contains a valve with a spring that can easily be occluded with a finger facilitating speech. When exhaling, push the lid to guide the air through your vocal cords and out through your mouth, to enable speech. After releasing the finger, the valve will open automatically.

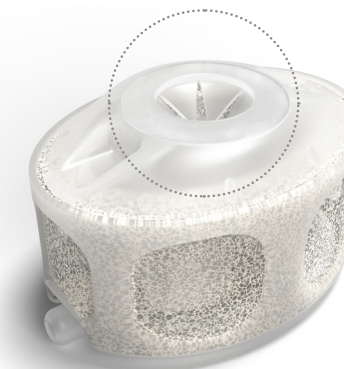


Suctioning with TrachPhone

TrachPhone has an integrated suctioning port which allows for tracheal suction without removing the HME, which helps to reduce the risk for tracheal irritation.

When suctioning, insert the suction catheter through the suction port and suction according to guidance from your clinician.

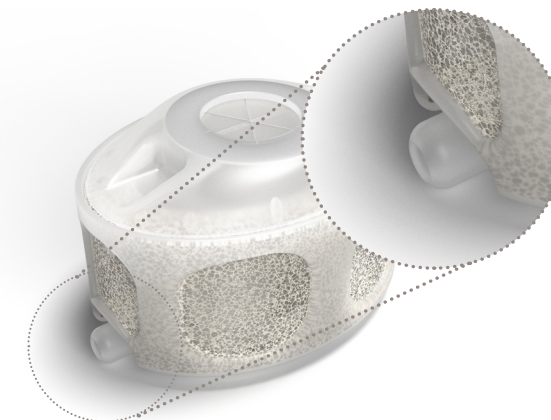
In case of coughing or blockage the suction port also acts as a relief valve.



Providing supplemental oxygen

TrachPhone has an oxygen port (4 mm) that allows for integrated administration of supplemental oxygen.

If supplemental oxygen is required, connect an oxygen tube to the oxygen port. Use oxygen levels as provided by your clinician.



How to use

- 1 Place TrachPhone onto the end of your tracheostomy tube.
- 2 Check connection is properly fixed.
- 3 Replace every 24 hours or more often as required, to avoid an increase in breathing resistance due to accumulation of secretions.
- 4 Before use, check product for deformity and valve function by closing the valve and releasing it.
- 5 Do not use if the device shows any signs of defect, or if the package is opened or damaged.

TrachPhone can be worn when physically active and when relaxing, it is also suitable to be worn during sleep.




Contact us for more information

We develop products in close cooperation with leading institutions, doctors, physicians, nurses, speech language pathologists, and patients from all over the world, to improve patients' quality of life through smart and innovative solutions.

Please discuss with your treating physician if TrachPhone is right for you.

For more information about our assortment and Instructions for Use, please visit www.atosmedical.com.

Ordering Information		REF
	TrachPhone®, 30 pcs	7707
	TrachPhone®, 50 pcs	7704

Always read the Instructions for use before starting to use any of the products. For Instructions for use, please visit www.atosmedical.com.

Please note: All products and product variations may not be available in all regions. Check availability with your local Atos Medical representative.

Head office:

Atos Medical AB,
Hyllie Boulevard 17,
SE-215 32 Malmö, Sweden

Manufacturer:

Atos Medical AB,
Kraftgatan 8,
SE-242 35 Horby, Sweden

Tel: +46 (0) 415 198 00,
Email: info@atosmedical.com

Atos

Breathing-Speaking-Living
atosmedical.com